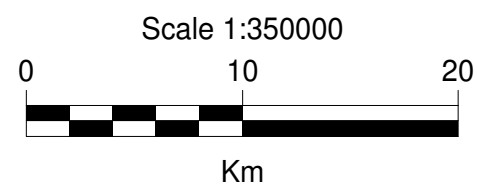
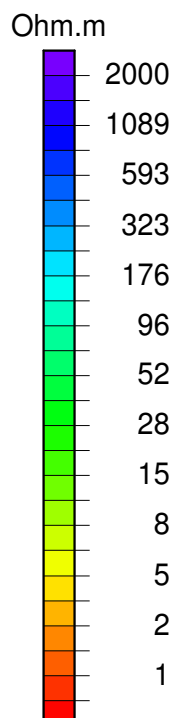


- ▲ MT2008-2009
- ▲ MT 2010
- ▲ MT, not used in 2010 Inversion



3D MT INVERSION:

Input Data: 238 EDI file
Data inverted: impedances and tipper
3D Model: 05_Apr08_reSTART
Mesh size: 353 x 335 x 74km
Mesh dimensions: 121 x 99 x 112
Orientation: E 16°S
Core cell dimension: 0.80 x 0.80 x 0.1 km
Input frequency range: 0.003 to 300 Hz
Using REPORTED errors
lnZxy, lnZyx phase and amplitude error floor: 3.0%
Zxx, Zyy error floor: 20%
Tau: 3
Cumulative iterations: 50
Final RMS: 2.525



COORDINATES:

XY Units: Kilometers
Elevation: Meters
Projection: Transverse Mercator
Coordinates of True Origin: 0.000m N, 500000m E
Central Meridian: 147°E
Datum: WGS84
Spheroid: WGS84
Topography from 90m SRTM
(contour line interval 100m)

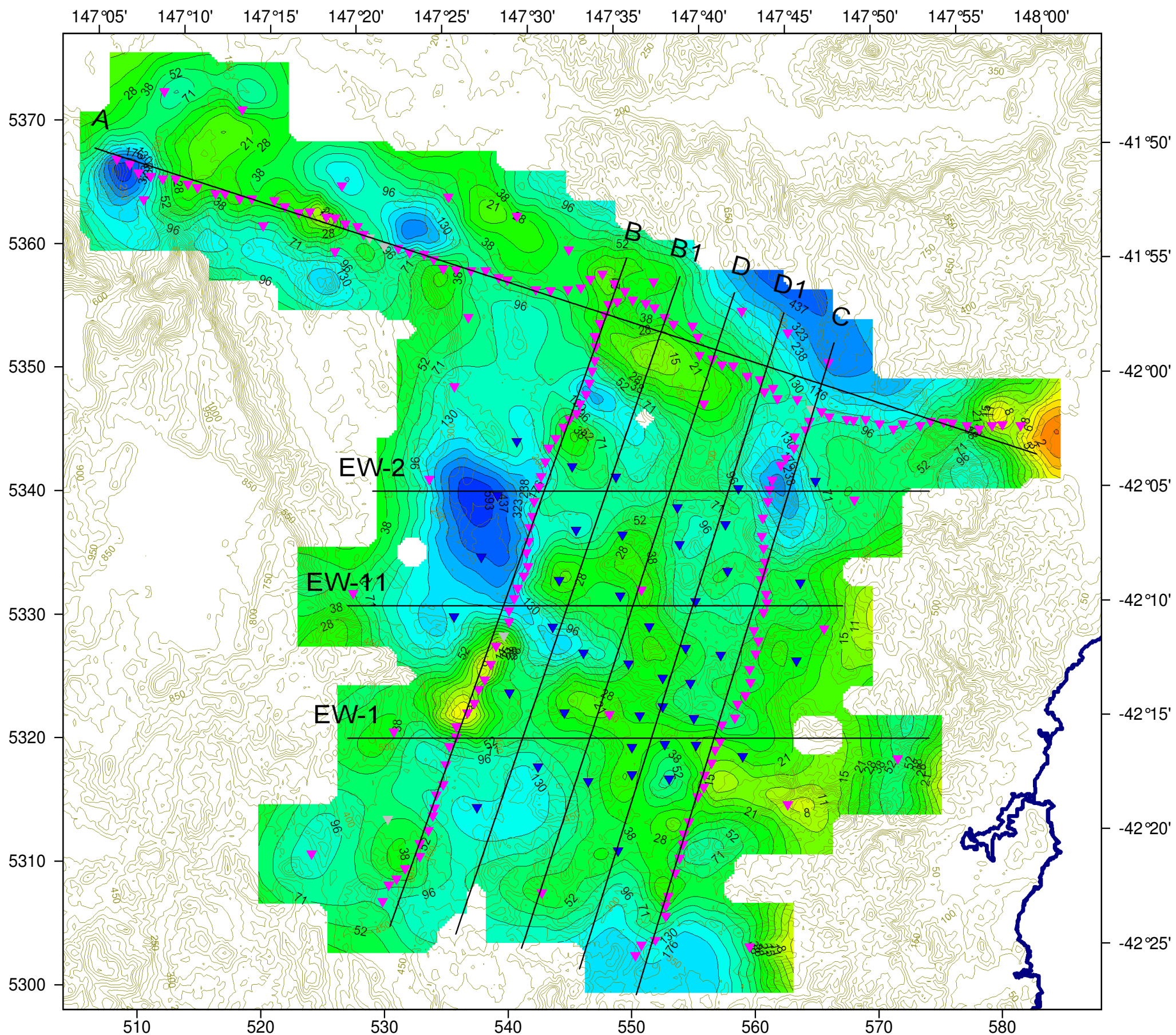
KUTh Energy Pty Ltd.

MAGNETOTELLURIC SURVEY
Tasmania, AUSTRALIA

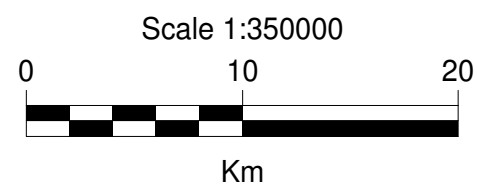
Plate 2a
Resistivity at 0m msl

WesternGeco EM - Geosystem

May, 2010

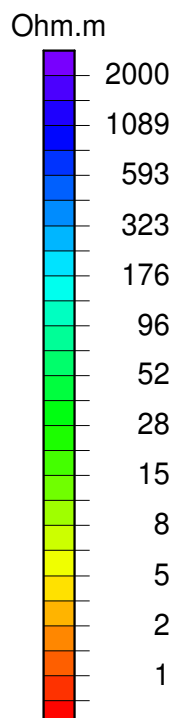


- ▲ MT2008-2009
- ▲ MT 2010
- ▲ MT, not used in 2010 Inversion



3D MT INVERSION:

Input Data: 238 EDI file
Data inverted: impedances and tipper
3D Model: 05_Apr08_reSTART
Mesh size: 353 x 335 x 74km
Mesh dimensions: 121 x 99 x 112
Orientation: E 16°S
Core cell dimension: 0.80 x 0.80 x 0.1 km
Input frequency range: 0.003 to 300 Hz
Using REPORTED errors
lnZxy, lnZyx phase and amplitude error floor: 3.0%
Zxx, Zyy error floor: 20%
Tau: 3
Cumulative iterations: 50
Final RMS: 2.525



COORDINATES:

XY Units: Kilometers
Elevation: Meters
Projection: Transverse Mercator
Coordinates of True Origin: 0.000m N, 500000m E
Central Meridian: 147°E
Datum: WGS84
Spheroid: WGS84
Topography from 90m SRTM
(contour line interval 100m)

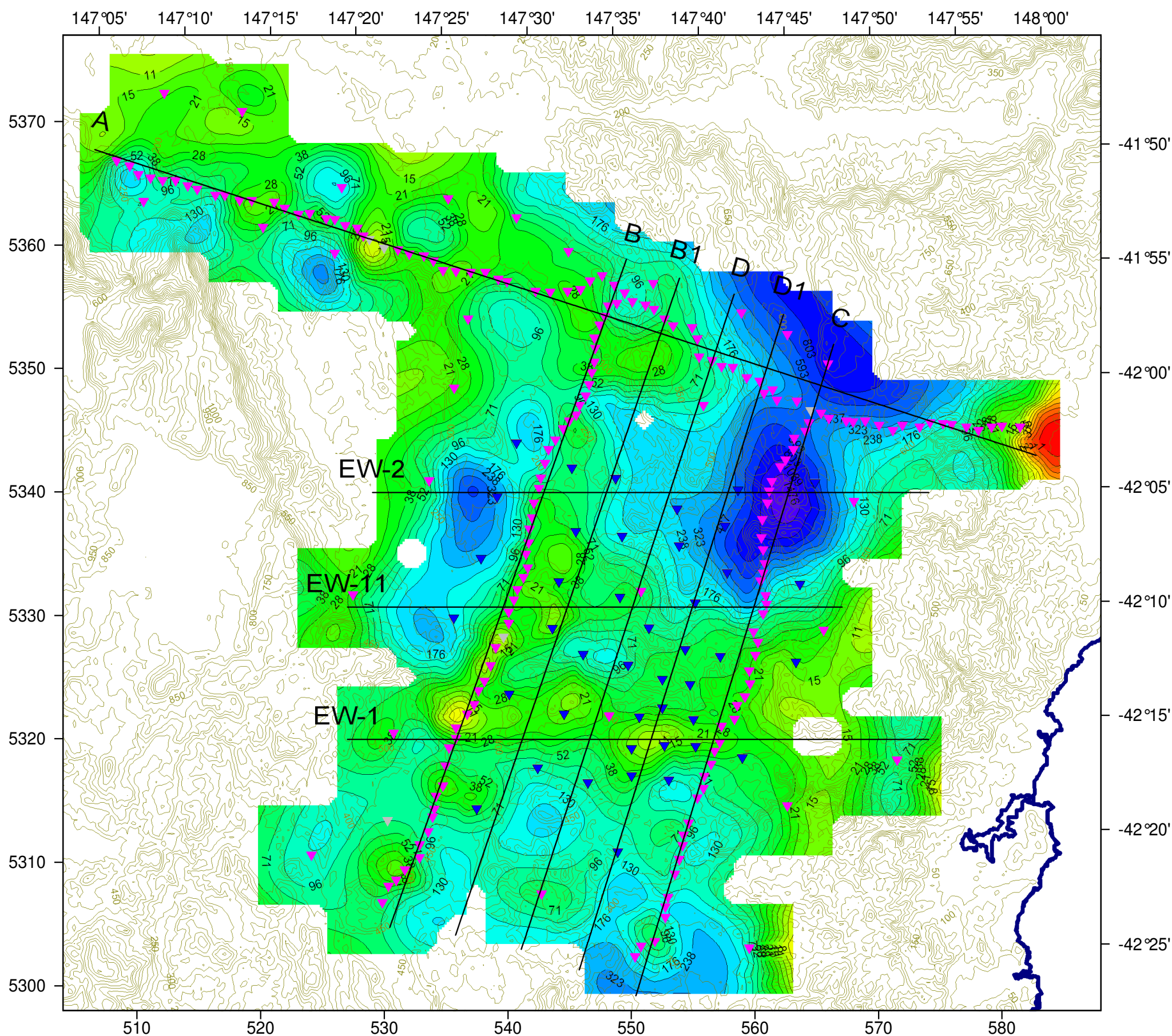
KUTh Energy Pty Ltd.

MAGNETOTELLURIC SURVEY
Tasmania, AUSTRALIA

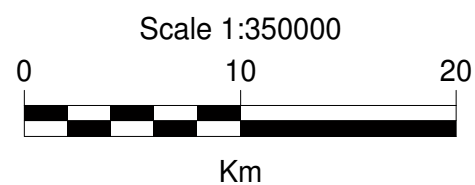
Plate 2b
Resistivity at -250m msl

WesternGeco EM - Geosystem

May, 2010

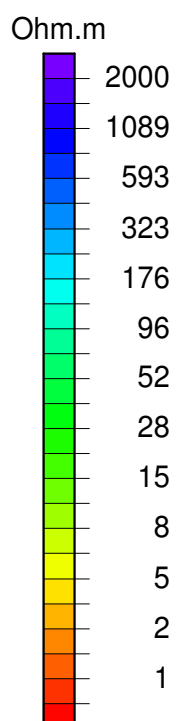


- ▲ MT2008-2009
- ▲ MT 2010
- ▲ MT, not used in 2010 Inversion



3D MT INVERSION:

Input Data: 238 EDI file
Data inverted: impedances and tipper
3D Model: 05_Apr08_reSTART
Mesh size: 353 x 335 x 74km
Mesh dimensions: 121 x 99 x 112
Orientation: E 16°S
Core cell dimension: 0.80 x 0.80 x 0.1 km
Input frequency range: 0.003 to 300 Hz
Using REPORTED errors
lnZxy, lnZyx phase and amplitude error floor: 3.0%
Zxx, Zyy error floor: 20%
Tau: 3
Cumulative iterations: 50
Final RMS: 2.525



COORDINATES:

XY Units: Kilometers
Elevation: Meters
Projection: Transverse Mercator
Coordinates of True Origin: 0.000m N, 500000m E
Central Meridian: 147°E
Datum: WGS84
Spheroid: WGS84
Topography from 90m SRTM
(contour line interval 100m)

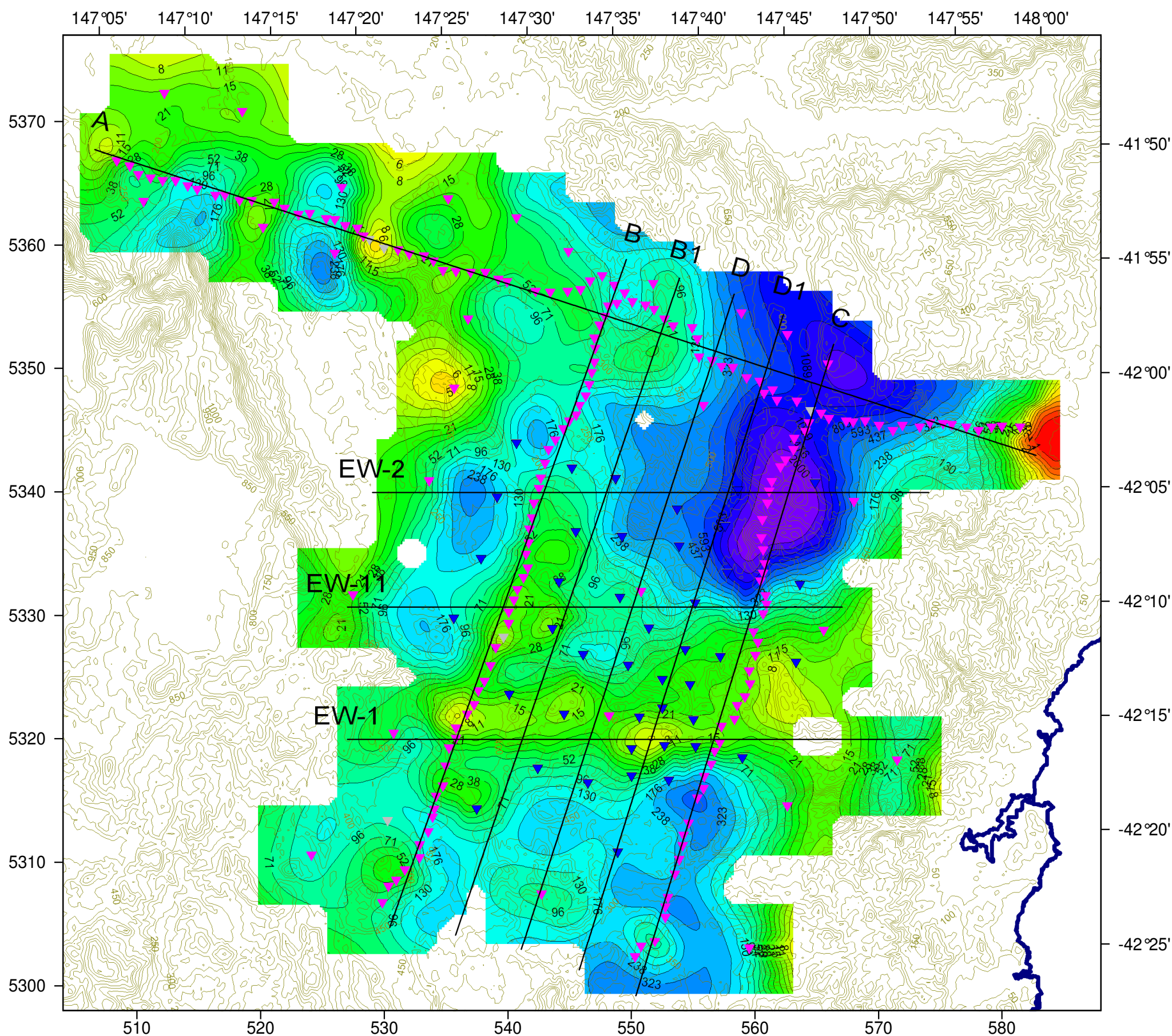
KUTh Energy Pty Ltd.

MAGNETOTELLURIC SURVEY
Tasmania, AUSTRALIA

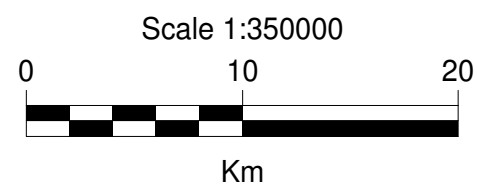
Plate 2c
Resistivity at -500m msl

WesternGeco EM - Geosystem

May, 2010

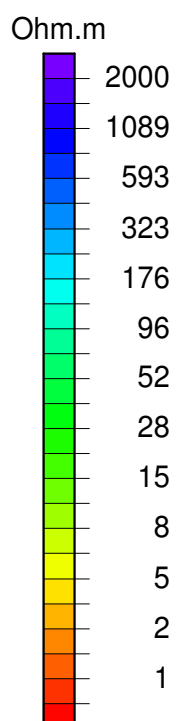


- ▲ MT2008-2009
- ▲ MT 2010
- ▲ MT, not used in 2010 Inversion



3D MT INVERSION:

Input Data: 238 EDI file
Data inverted: impedances and tipper
3D Model: 05_Apr08_reSTART
Mesh size: 353 x 335 x 74km
Mesh dimensions: 121 x 99 x 112
Orientation: E 16°S
Core cell dimension: 0.80 x 0.80 x 0.1 km
Input frequency range: 0.003 to 300 Hz
Using REPORTED errors
lnZxy, lnZyx phase and amplitude error floor: 3.0%
Zxx, Zyy error floor: 20%
Tau: 3
Cumulative iterations: 50
Final RMS: 2.525



COORDINATES:

XY Units: Kilometers
Elevation: Meters
Projection: Transverse Mercator
Coordinates of True Origin: 0.000m N, 500000m E
Central Meridian: 147°E
Datum: WGS84
Spheroid: WGS84
Topography from 90m SRTM
(contour line interval 100m)

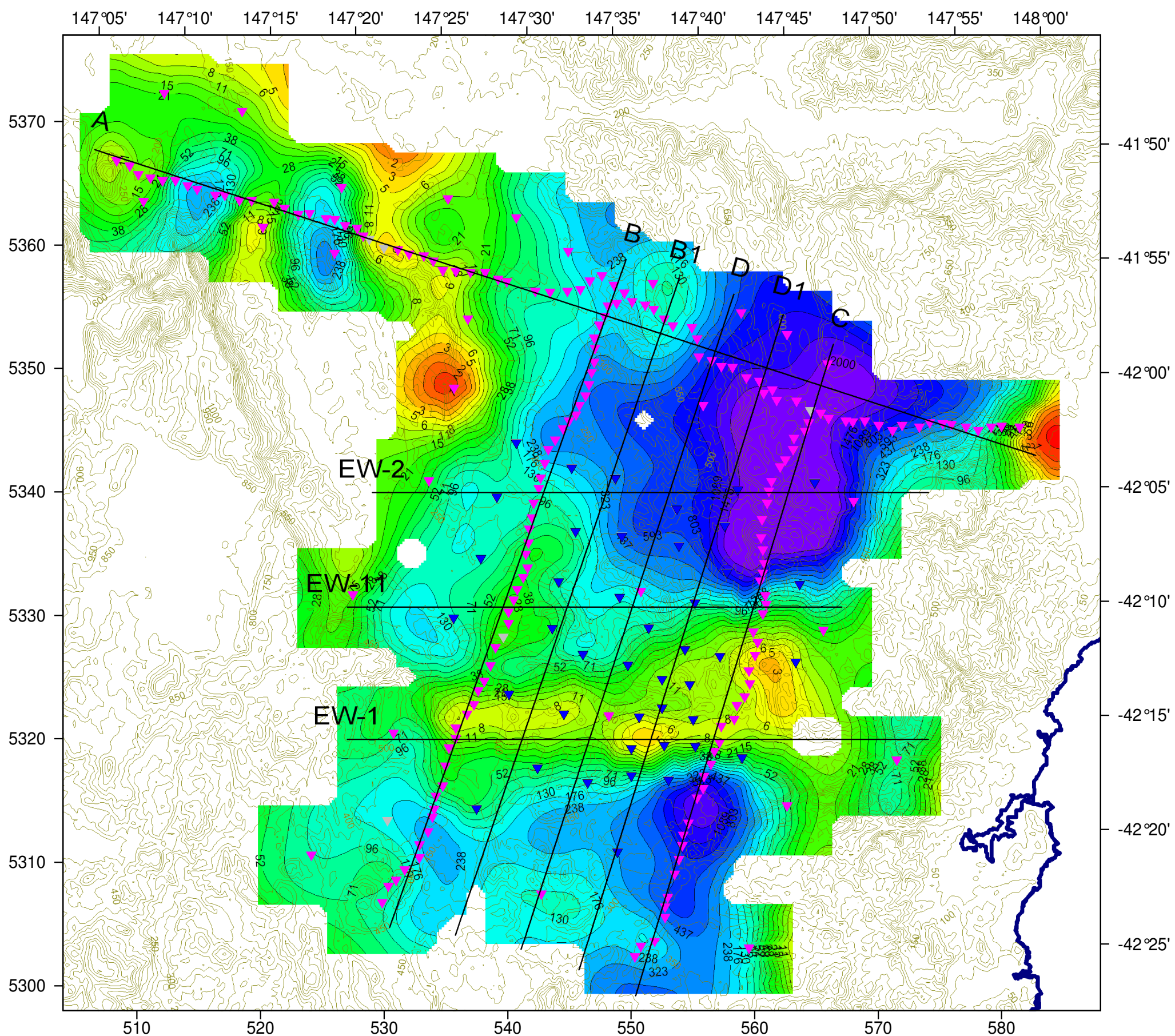
KUTh Energy Pty Ltd.

MAGNETOTELLURIC SURVEY
Tasmania, AUSTRALIA

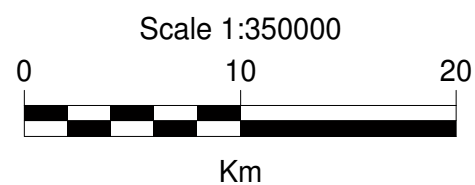
Plate 2d
Resistivity at -750m msl

WesternGeco EM - Geosystem

May, 2010

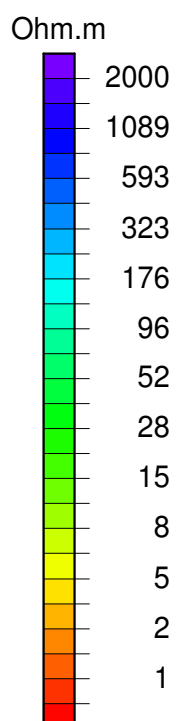


- ▲ MT2008-2009
- ▲ MT 2010
- ▲ MT, not used in 2010 Inversion



3D MT INVERSION:

Input Data: 238 EDI file
Data inverted: impedances and tipper
3D Model: 05_Apr08_reSTART
Mesh size: 353 x 335 x 74km
Mesh dimensions: 121 x 99 x 112
Orientation: E 16°S
Core cell dimension: 0.80 x 0.80 x 0.1 km
Input frequency range: 0.003 to 300 Hz
Using REPORTED errors
lnZxy, lnZyx phase and amplitude error floor: 3.0%
Zxx, Zyy error floor: 20%
Tau: 3
Cumulative iterations: 50
Final RMS: 2.525



COORDINATES:

XY Units: Kilometers
Elevation: Meters
Projection: Transverse Mercator
Coordinates of True Origin: 0.000m N, 500000m E
Central Meridian: 147°E
Datum: WGS84
Spheroid: WGS84
Topography from 90m SRTM
(contour line interval 100m)

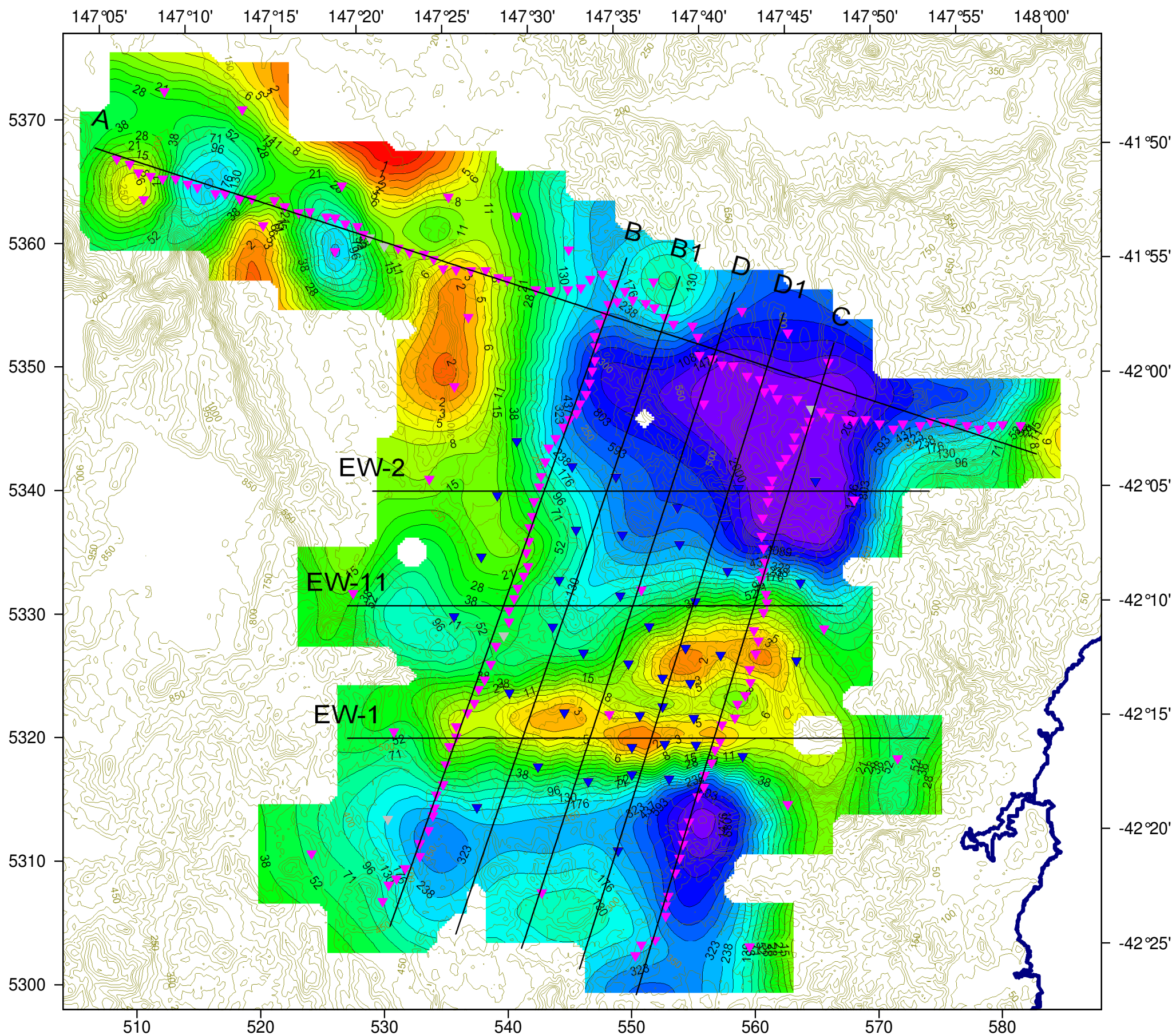
KUTh Energy Pty Ltd.

MAGNETOTELLURIC SURVEY
Tasmania, AUSTRALIA

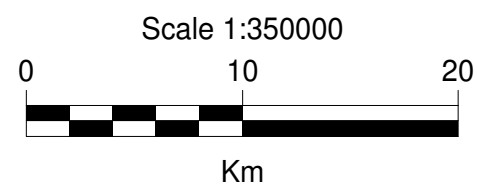
Plate 2e
Resistivity at -1000m msl

WesternGeco EM - Geosystem

May, 2010

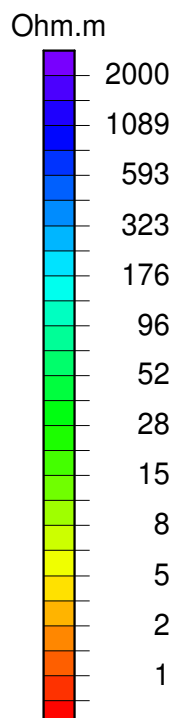


- ▲ MT2008-2009
- ▲ MT 2010
- ▲ MT, not used in 2010 Inversion



3D MT INVERSION:

Input Data: 238 EDI file
Data inverted: impedances and tipper
3D Model: 05_Apr08_reSTART
Mesh size: 353 x 335 x 74km
Mesh dimensions: 121 x 99 x 112
Orientation: E 16°S
Core cell dimension: 0.80 x 0.80 x 0.1 km
Input frequency range: 0.003 to 300 Hz
Using REPORTED errors
lnZxy, lnZyx phase and amplitude error floor: 3.0%
Zxx, Zyy error floor: 20%
Tau: 3
Cumulative iterations: 50
Final RMS: 2.525



COORDINATES:

XY Units: Kilometers
Elevation: Meters
Projection: Transverse Mercator
Coordinates of True Origin: 0.000m N, 500000m E
Central Meridian: 147°E
Datum: WGS84
Spheroid: WGS84
Topography from 90m SRTM
(contour line interval 100m)

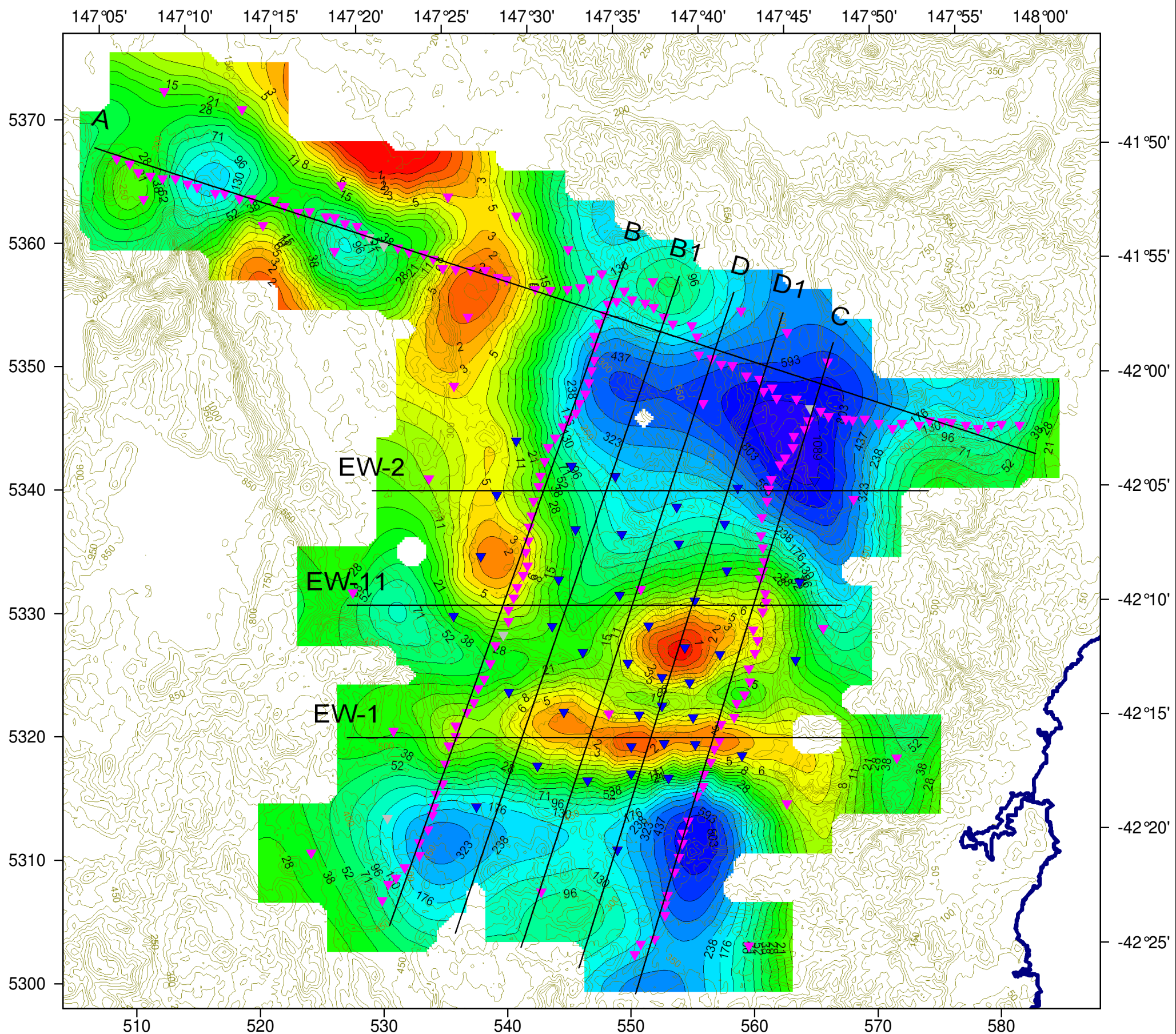
KUTh Energy Pty Ltd.

MAGNETOTELLURIC SURVEY
Tasmania, AUSTRALIA

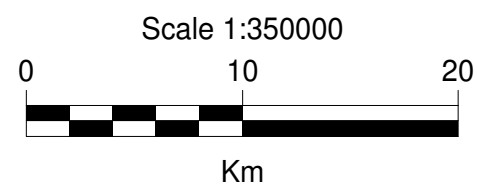
Plate 2f
Resistivity at -1500m msl

WesternGeco EM - Geosystem

May, 2010

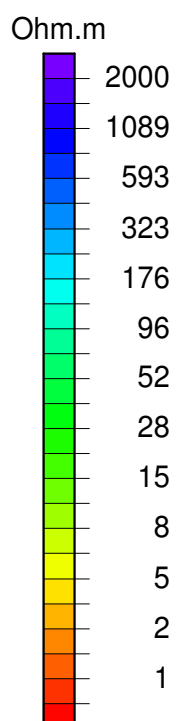


- ▲ MT2008-2009
- ▲ MT 2010
- ▲ MT, not used in 2010 Inversion



3D MT INVERSION:

Input Data: 238 EDI file
Data inverted: impedances and tipper
3D Model: 05_Apr08_reSTART
Mesh size: 353 x 335 x 74km
Mesh dimensions: 121 x 99 x 112
Orientation: E 16°S
Core cell dimension: 0.80 x 0.80 x 0.1 km
Input frequency range: 0.003 to 300 Hz
Using REPORTED errors
lnZxy, lnZyx phase and amplitude error floor: 3.0%
Zxx, Zyy error floor: 20%
Tau: 3
Cumulative iterations: 50
Final RMS: 2.525



COORDINATES:

XY Units: Kilometers
Elevation: Meters
Projection: Transverse Mercator
Coordinates of True Origin: 0.000m N, 500000m E
Central Meridian: 147°E
Datum: WGS84
Spheroid: WGS84
Topography from 90m SRTM
(contour line interval 100m)

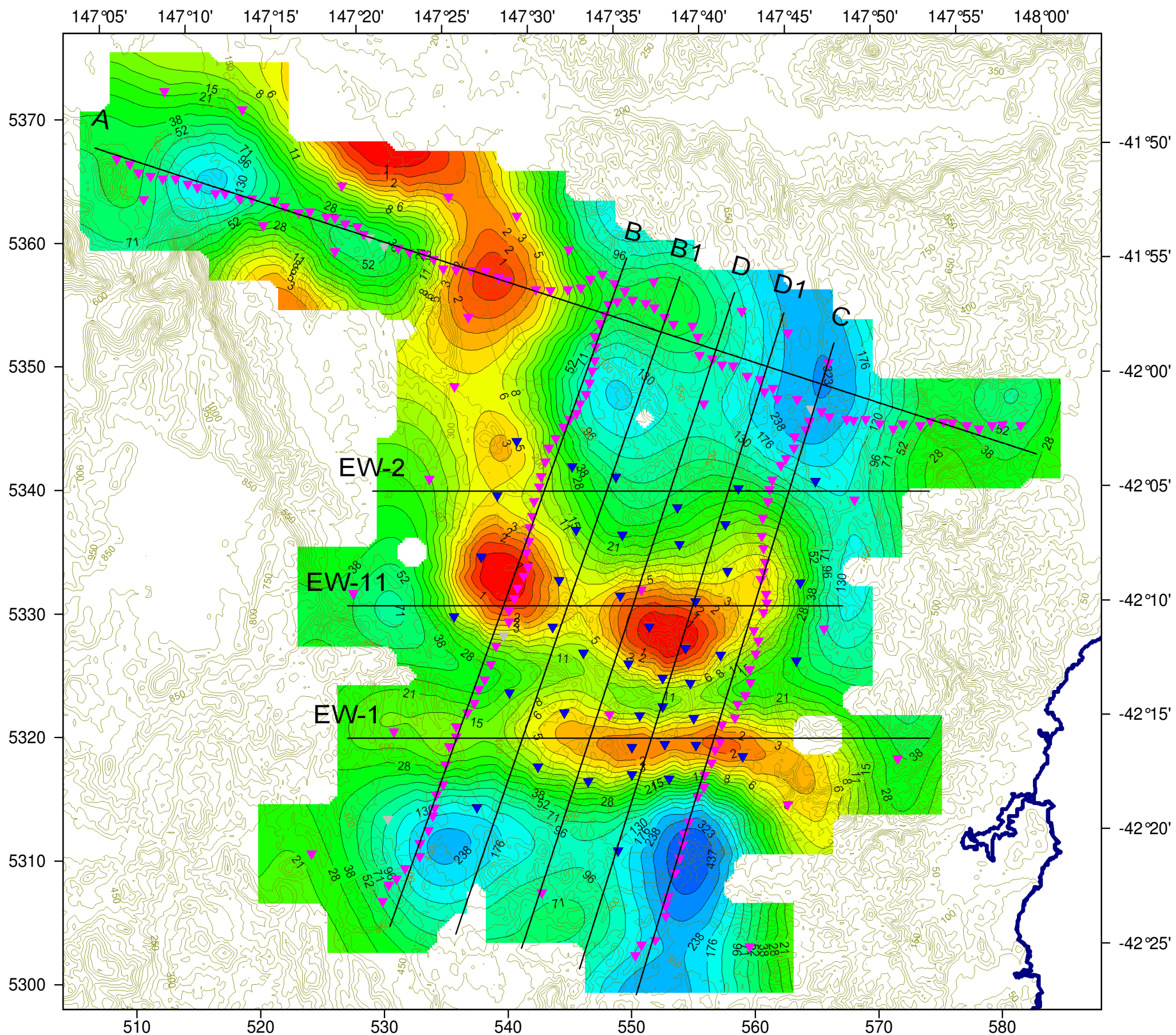
KUTh Energy Pty Ltd.

MAGNETOTELLURIC SURVEY
Tasmania, AUSTRALIA

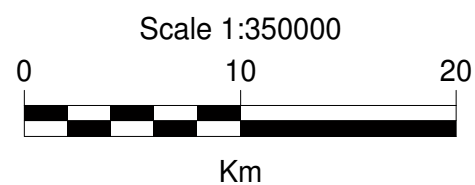
Plate 2g
Resistivity at -2000m msl

WesternGeco EM - Geosystem

May, 2010

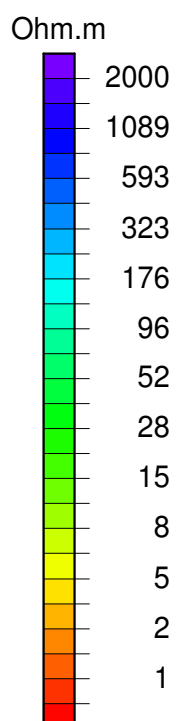


- ▲ MT2008-2009
- ▲ MT 2010
- ▲ MT, not used in 2010 Inversion



3D MT INVERSION:

Input Data: 238 EDI file
Data inverted: impedances and tipper
3D Model: 05_Apr08_reSTART
Mesh size: 353 x 335 x 74km
Mesh dimensions: 121 x 99 x 112
Orientation: E 16°S
Core cell dimension: 0.80 x 0.80 x 0.1 km
Input frequency range: 0.003 to 300 Hz
Using REPORTED errors
lnZxy, lnZyx phase and amplitude error floor: 3.0%
Zxx, Zyy error floor: 20%
Tau: 3
Cumulative iterations: 50
Final RMS: 2.525



COORDINATES:

XY Units: Kilometers
Elevation: Meters
Projection: Transverse Mercator
Coordinates of True Origin: 0.000m N, 500000m E
Central Meridian: 147°E
Datum: WGS84
Spheroid: WGS84
Topography from 90m SRTM
(contour line interval 100m)

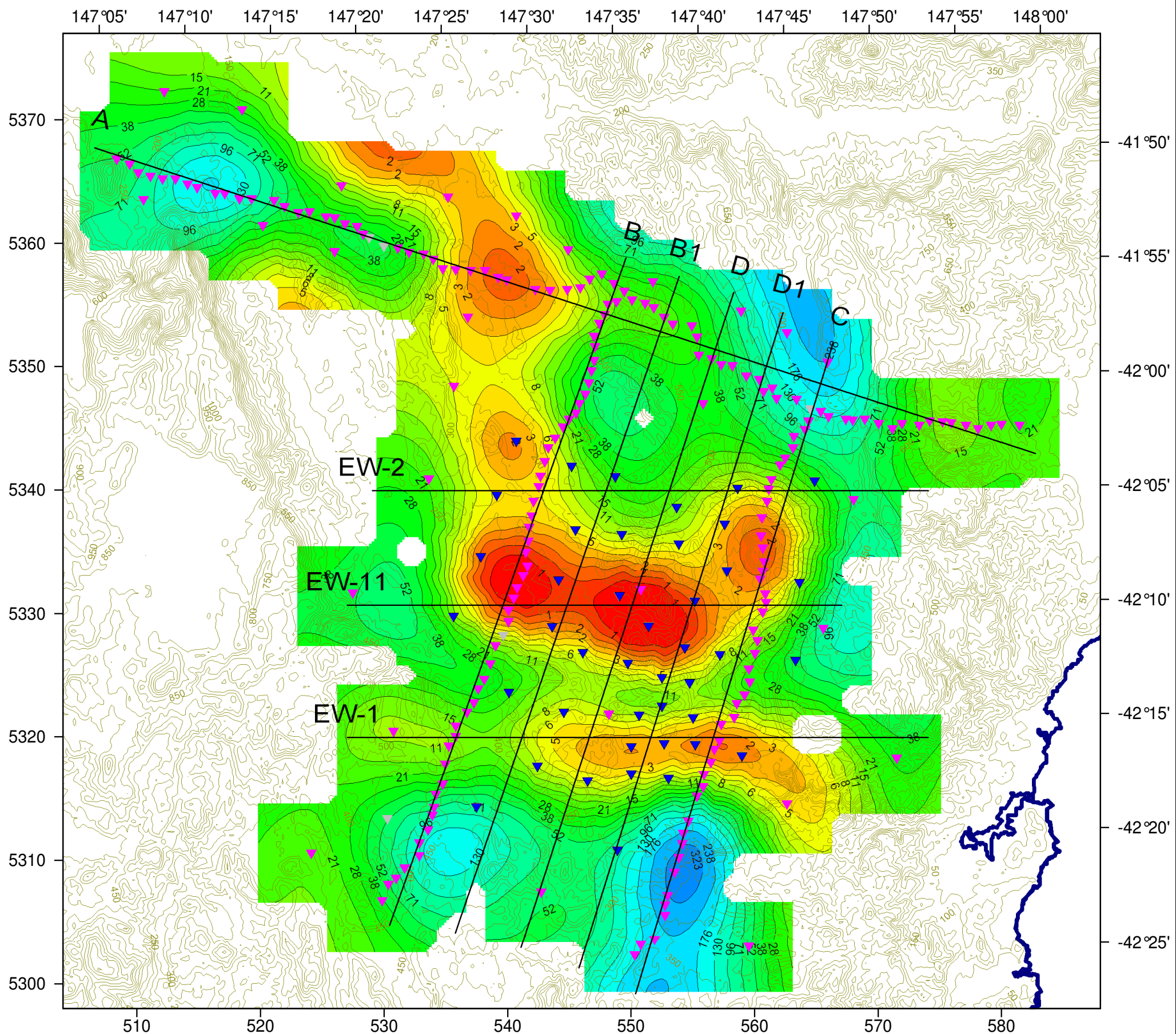
KUTh Energy Pty Ltd.

MAGNETOTELLURIC SURVEY
Tasmania, AUSTRALIA

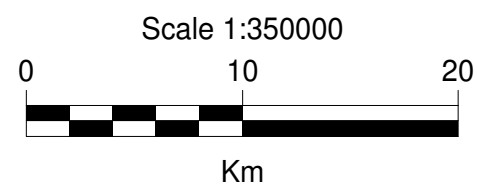
Plate 2h
Resistivity at -2500m msl

WesternGeco EM - Geosystem

May, 2010

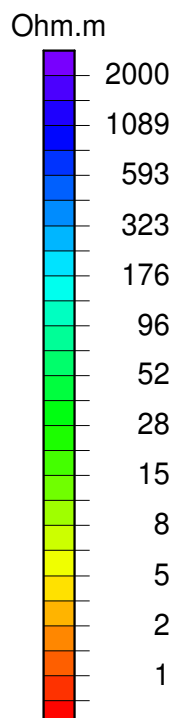


- ▲ MT2008-2009
- ▲ MT 2010
- ▲ MT, not used in 2010 Inversion



3D MT INVERSION:

Input Data: 238 EDI file
Data inverted: impedances and tipper
3D Model: 05_Apr08_reSTART
Mesh size: 353 x 335 x 74km
Mesh dimensions: 121 x 99 x 112
Orientation: E 16°S
Core cell dimension: 0.80 x 0.80 x 0.1 km
Input frequency range: 0.003 to 300 Hz
Using REPORTED errors
lnZxy, lnZyx phase and amplitude error floor: 3.0%
Zxx, Zyy error floor: 20%
Tau: 3
Cumulative iterations: 50
Final RMS: 2.525



COORDINATES:

XY Units: Kilometers
Elevation: Meters
Projection: Transverse Mercator
Coordinates of True Origin: 0.000m N, 500000m E
Central Meridian: 147°E
Datum: WGS84
Spheroid: WGS84
Topography from 90m SRTM
(contour line interval 100m)

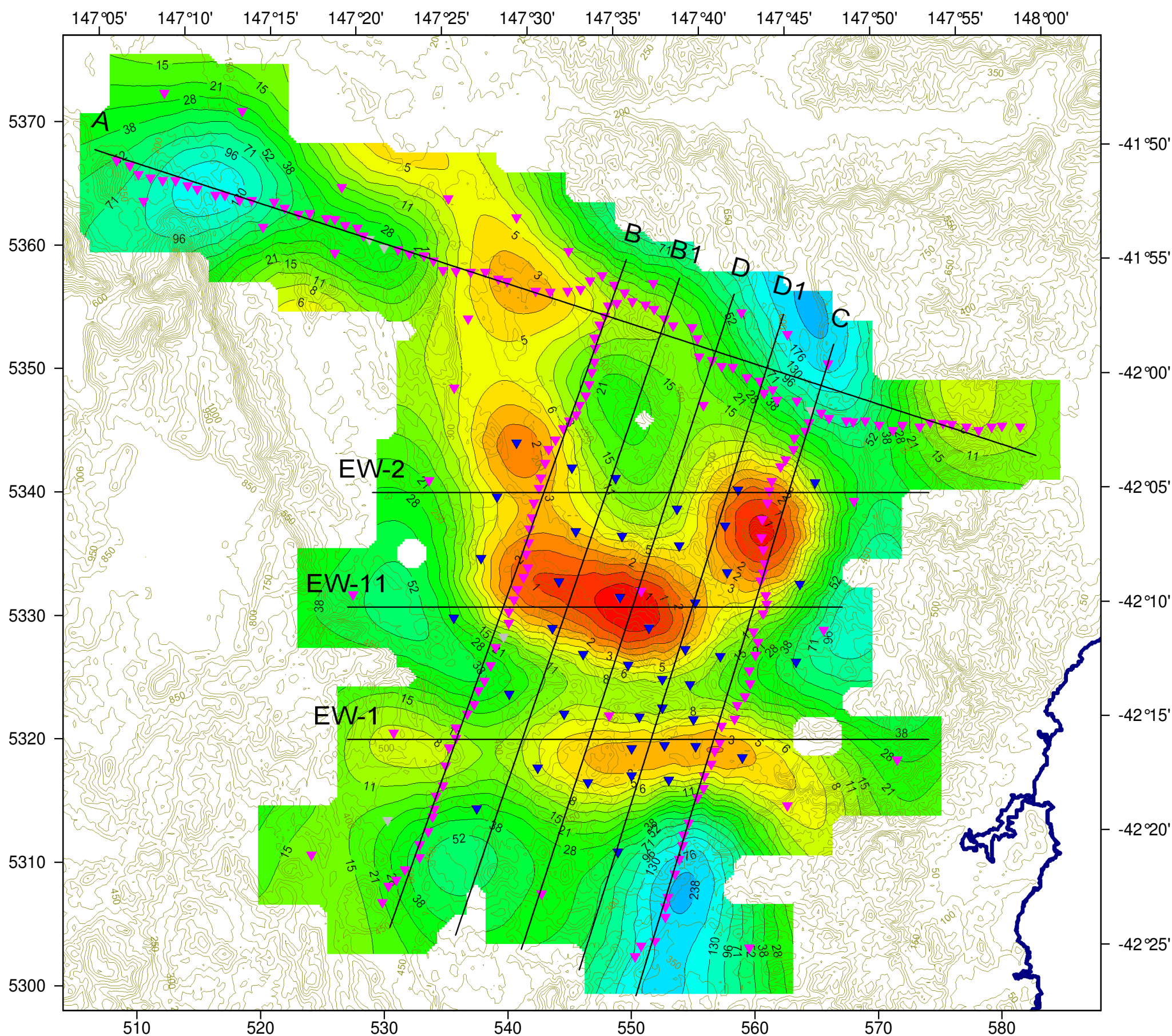
KUTh Energy Pty Ltd.

MAGNETOTELLURIC SURVEY
Tasmania, AUSTRALIA

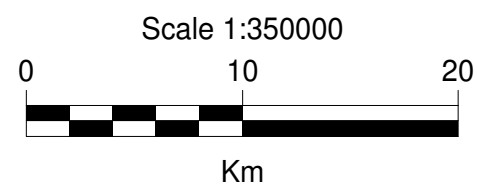
Plate 2i
Resistivity at -3000m msl

WesternGeco EM - Geosystem

May, 2010

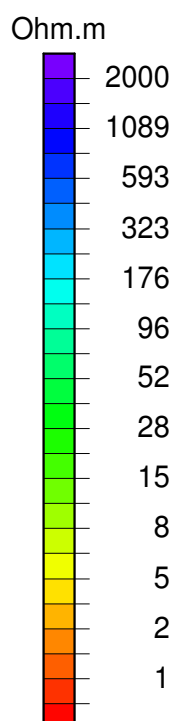


- MT2008-2009
- MT 2010
- MT, not used in 2010 Inversion



3D MT INVERSION:

Input Data: 238 EDI file
Data inverted: impedances and tipper
3D Model: 05_Apr08_reSTART
Mesh size: 353 x 335 x 74km
Mesh dimensions: 121 x 99 x 112
Orientation: E 16°S
Core cell dimension: 0.80 x 0.80 x 0.1 km
Input frequency range: 0.003 to 300 Hz
Using REPORTED errors
lnZxy, lnZyx phase and amplitude error floor: 3.0%
Zxx, Zyy error floor: 20%
Tau: 3
Cumulative iterations: 50
Final RMS: 2.525



COORDINATES:

XY Units: Kilometers
Elevation: Meters
Projection: Transverse Mercator
Coordinates of True Origin: 0.000m N, 500000m E
Central Meridian: 147°E
Datum: WGS84
Spheroid: WGS84
Topography from 90m SRTM
(contour line interval 100m)

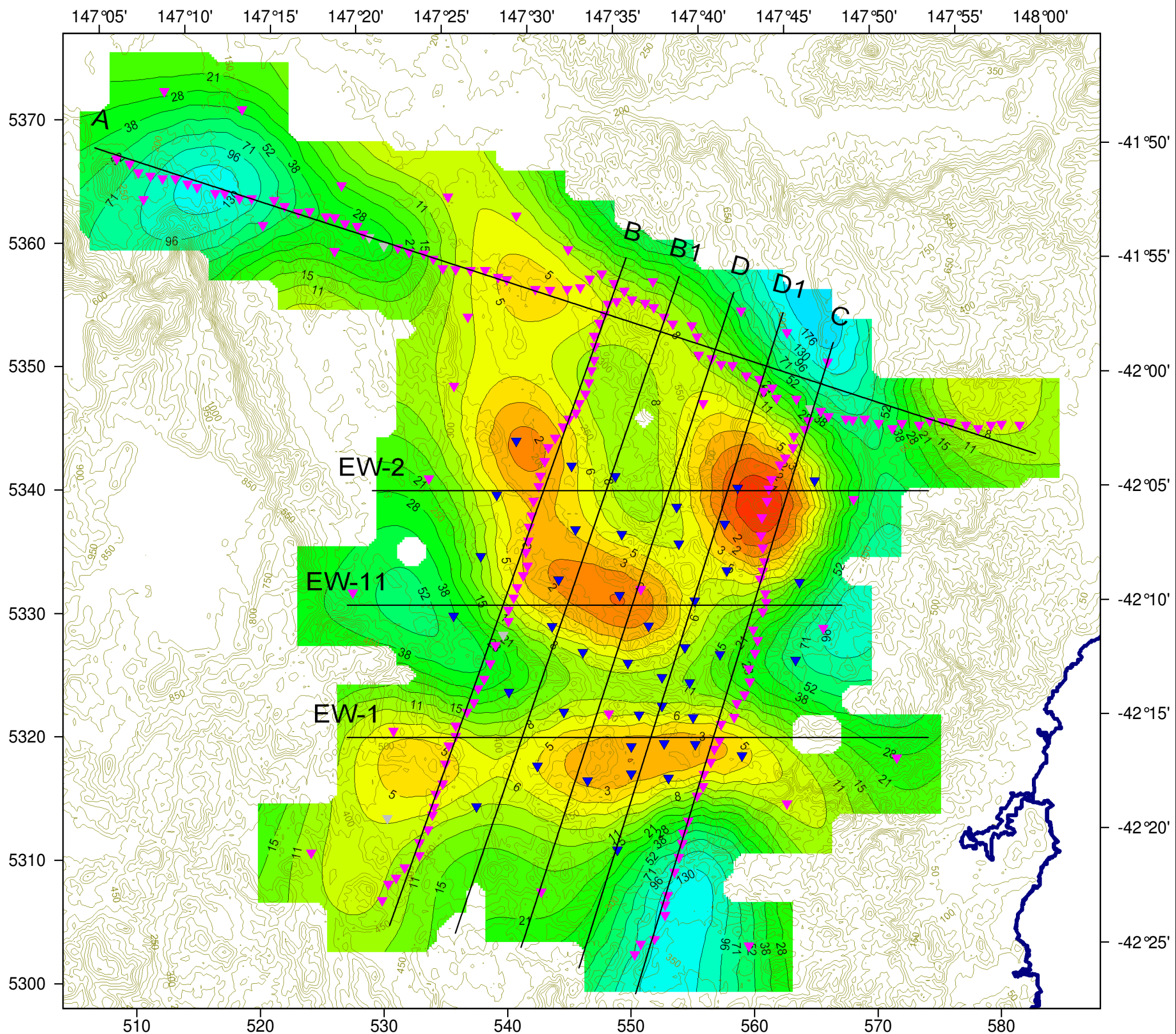
KUTh Energy Pty Ltd.

MAGNETOTELLURIC SURVEY
Tasmania, AUSTRALIA

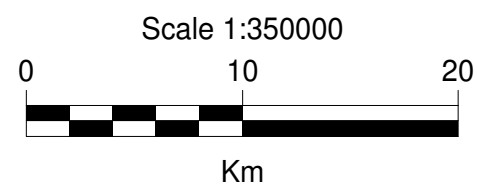
Plate 2j
Resistivity at -3500m msl

WesternGeco EM - Geosystem

May, 2010

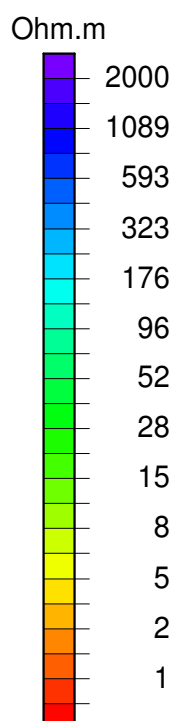


- ▲ MT2008-2009
- ▲ MT 2010
- ▲ MT, not used in 2010 Inversion



3D MT INVERSION:

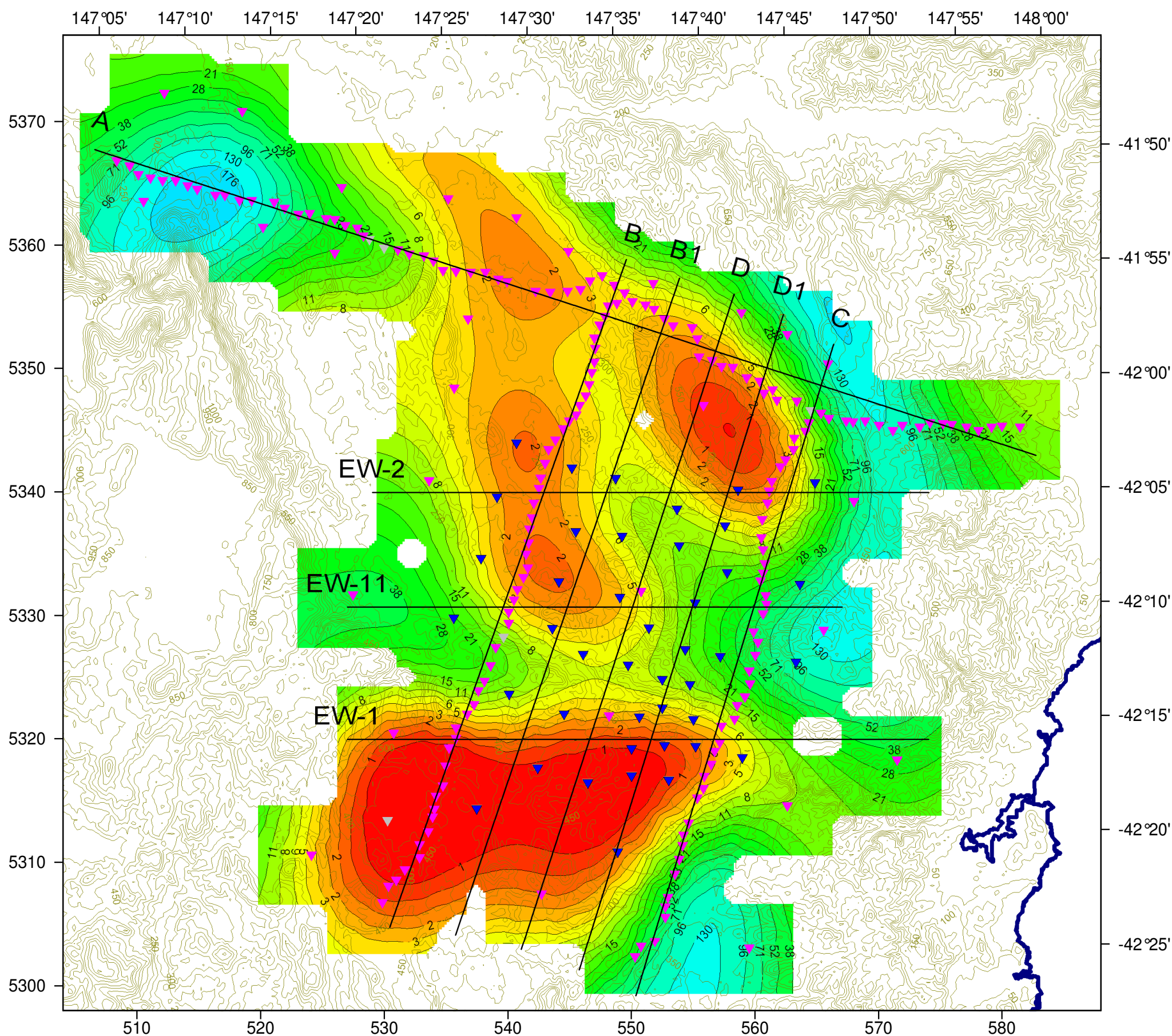
Input Data: 238 EDI file
Data inverted: impedances and tipper
3D Model: 05_Apr08_reSTART
Mesh size: 353 x 335 x 74km
Mesh dimensions: 121 x 99 x 112
Orientation: E 16°S
Core cell dimension: 0.80 x 0.80 x 0.1 km
Input frequency range: 0.003 to 300 Hz
Using REPORTED errors
lnZxy, lnZyx phase and amplitude error floor: 3.0%
Zxx, Zyy error floor: 20%
Tau: 3
Cumulative iterations: 50
Final RMS: 2.525



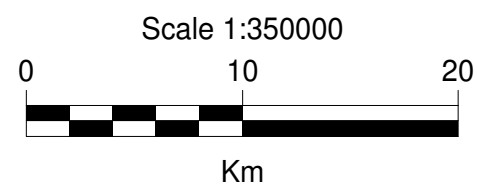
COORDINATES:

XY Units: Kilometers
Elevation: Meters
Projection: Transverse Mercator
Coordinates of True Origin: 0.000m N, 500000m E
Central Meridian: 147°E
Datum: WGS84
Spheroid: WGS84
Topography from 90m SRTM
(contour line interval 100m)

KUTh Energy Pty Ltd.	
MAGNETOTELLURIC SURVEY Tasmania, AUSTRALIA	
Plate 2k Resistivity at -4000m msl	
WesternGeco EM - Geosystem	May, 2010

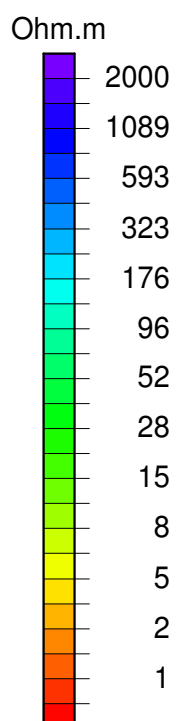


- ▲ MT2008-2009
- ▲ MT 2010
- ▲ MT, not used in 2010 Inversion



3D MT INVERSION:

Input Data: 238 EDI file
Data inverted: impedances and tipper
3D Model: 05_Apr08_reSTART
Mesh size: 353 x 335 x 74km
Mesh dimensions: 121 x 99 x 112
Orientation: E 16°S
Core cell dimension: 0.80 x 0.80 x 0.1 km
Input frequency range: 0.003 to 300 Hz
Using REPORTED errors
lnZxy, lnZyx phase and amplitude error floor: 3.0%
Zxx, Zyy error floor: 20%
Tau: 3
Cumulative iterations: 50
Final RMS: 2.525



COORDINATES:

XY Units: Kilometers
Elevation: Meters
Projection: Transverse Mercator
Coordinates of True Origin: 0.000m N, 500000m E
Central Meridian: 147°E
Datum: WGS84
Spheroid: WGS84
Topography from 90m SRTM
(contour line interval 100m)

KUTh Energy Pty Ltd.

MAGNETOTELLURIC SURVEY
Tasmania, AUSTRALIA

Plate 21
Resistivity at -5000m msl

WesternGeco EM - Geosystem

May, 2010